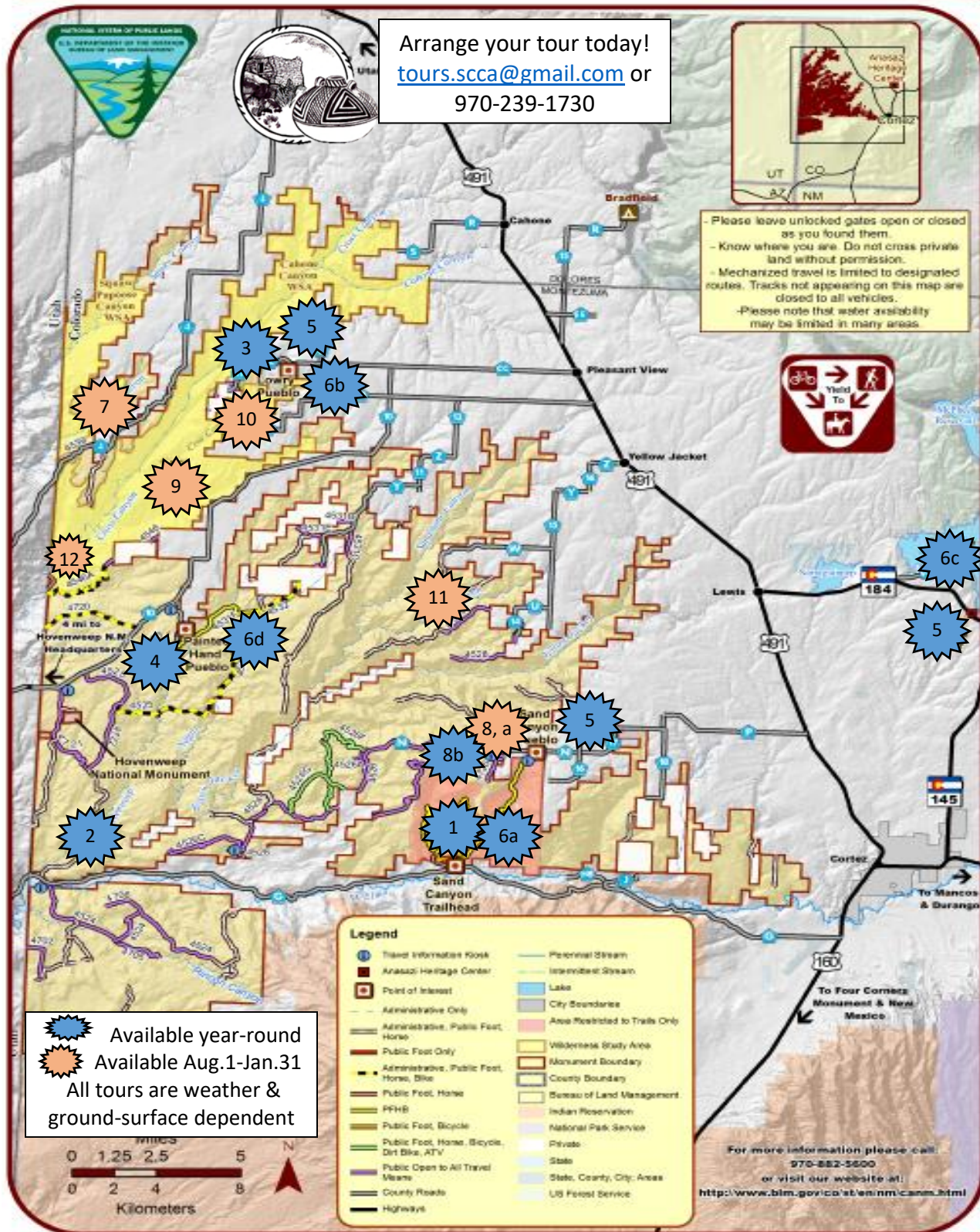


TOURS BY SOUTHWEST COLORADO CANYONS ALLIANCE on

Canyons of the Ancients National Monument





Southwest Colorado Canyons Alliance
Interpretive Tours on Canyons of the Ancients National Monument
(Please refer to map for number correlation)

tours.scca@gmail.com

970-239-1730

1. Sand Canyon Trail Interpretive Hikes (Available all year)

Enjoy a half-day, 3/4-day, or full-day hike in Canyons of the Ancients' premier archaeological district. Learn from your knowledgeable guide about the history of the Ancestral Pueblo people who inhabited the Four Corners region. The Sand Canyon District contains numerous alcove (cliff dwelling) sites where people lived from approximately A.D. 1100-1285, just before they migrated en masse to the south. How did these people utilize the geology, plant and animal life, and water sources to not only survive but to thrive in this high-desert area? What can we learn about their culture from the architecture left behind? Your guide can provide deep knowledge of sites that have been excavated and what early Euro-American explorers saw when they arrived. Optional: Finish your day with wine tasting at a local vineyard or head back to Cortez and enjoy a tasty treat at a restaurant suggested by your guide. (For the physically strong, the half-day tour dovetails nicely with Trip # 2 at a 10% discount!)

- Interpretive hikes with information on Visit with Respect, Leave No Trace, Ancestral Pueblo culture, botany, biology, archaeology
- Guide will meet participants at Sand Canyon parking area, Road G.
 - a. Half-day hike (approximately 4 miles):
 - \$200 for up to 4 people, additional \$25 per person over 4
 - b. Full-day hike (approximately 7-8 miles):
 - \$280 for up to 4 people, additional \$35 per person over 4
 - c. Extra East Rock loop (approximately 10 miles total):
 - \$335 for up to 4 people, additional \$42 per person over 4
 - d. Sand Canyon/East Rock 3/4-day hike (approximately 5 miles):
 - \$255 for up to 4 people, additional \$32 per person over 4



2. Petroglyphs and Time Depth Interpretive Tour (Available all year)



Hike and climb through time in an arid terrain that people have called home for centuries. This area holds some of the most intriguing rock art in Southwest Colorado. We can never know the true meaning of these petroglyphs, but we can appreciate the symbols left behind. Find the secret passage to the top of the mesa where you will see how the Ancestral Pueblo people built their villages before stone masonry. Down below, witness a castle on a boulder and a dam to create a reservoir when the drought became significant. How can we learn from their past endeavors for our changing world? Optional: Finish your day with wine tasting at a local vineyard or head back to Cortez and enjoy a tasty treat at a restaurant suggested by your guide. (This trip dovetails nicely with a half-day tour of Sand Canyon at a 10% discount!)

- Interpretive hike with information on Visit with Respect, Leave No Trace, Ancestral Pueblo culture, botany, biology, archaeology.

- Guide will meet participants at new Sand Canyon parking area, Road G, to travel to hiking area
- Distance: 3.5
- Suggested Time: 4-5 hours
- Cost: \$270 for up to 4 people, additional \$30 per person over 4
- Participants responsible for water/snacks, etc.
- Difficulty: challenging with maneuvering steep cliff access, moving through brush. Undefined social/animal trails.

3. Lowry Community Half-Day Tour (Available all year)

So much more to Lowry Pueblo National Historic Landmark than meets the eye! Begin your tour at the pueblo to discover what was happening on a regional level when this structure was initiated during the great Chaco era. Your guide will bring to light the many remodeling episodes and how the Great House was formed. Continue to the “neighborhood” of other Great Houses and contemporaneous pueblos. End your tour viewing a later community to see how architecture changes through time on the landscape. (This tour dovetails nicely with Tour # 4 at a 10% discount!)



- Interpretive hike with information on Visit with Respect, Leave No Trace, Ancestral Pueblo culture, botany, biology, archaeology.
- Guide will meet participants at Lowry Pueblo
- Suggested Time: 4 hours; participants responsible for lunch, water, snacks
- Cost: \$200 for up to 4 people, additional \$25 per person over 4
- Difficulty: Easy to moderate; some navigation through brush and rocks

4. Painted Hand Pueblo Community Half-Day Tour (Available all year)



Hike in to visit one of Southwest Colorado’s most photographed and celebrated pueblos! This moderately sized community, complete with tower and rock art, exemplifies gathering places of the Pueblo III time period. The Ancestral Pueblo people aggregated into large communities with public architecture that included towers, D-shaped structures, great kivas, and more. This talus village displays some of these features, but researchers have not determined its complete time span of existence. (This tour dovetails nicely with Tour # 3 at a 10% discount!)

- Interpretive hike with information on Visit with Respect, Leave No Trace, Ancestral Pueblo culture, botany, biology, archaeology.
- Guide will meet participants at road to Painted Hand Pueblo (BLM Road 4531)
- Suggested Time: 4 hours; participants responsible for lunch, water, snacks
- Cost: \$210 for up to 4 people, additional \$26 per person over 4
- Difficulty: Easy to moderate; some navigation through brush and rocks

5. Panoramic Monument Tour (Available all year)

When you have one full day to get the full picture of Canyons of the Ancients National Monument, this is the tour for you! Meet your guide at Canyons of the Ancients Visitor Center and Museum (CAVM) for an in-depth guided tour of the museum and two 11th century pueblos on the grounds. Your guide will provide detailed insights into Ancestral Pueblo history and culture. Learn about the Dolores Archaeological Project that became the impetus for the museum and set the standards for future archaeological research. Visit Dominguez and Escalante, two very different pueblos on museum grounds, to learn how they could have existed at the same time. After a quick lunch at CAVM's picnic area, travel in the comfort of your own vehicle to Lowry Pueblo (contemporaneous with Escalante and Dominguez Pueblos) and to Sand Canyon Pueblo, one of the large canyon-head communities that out-populated even the largest cliff dwelling at Mesa Verde! Appreciate the unqualified beauty of the Great Sage Plain with incredible views of the La Plata Mountains, Abajo and La Sal Mountains, the Chuskas and Shiprock, and even the famous Bears Ears!



- Allow \$7 additional per person (including guide) if the tour includes a museum visit (currently Thursdays, Fridays, Saturdays)
- Suggested time including museum: 6-8 hours [CAVM tour (2-2.5 hours) + Lowry (1-1.5 hours) + Sand Canyon Pueblo (1 hour) + Painted Hand Pueblo (2-2.5 hours) *OR* Big Point Overlook (.5 hour)]
- Suggested time without museum: 6-8 hours [CAVM, Dominguez and Escalante (1-1.5 hours) + Lowry (1-1.5 hours) + Painted Hand (2-2.5 hours) *OR* Big Point Overlook (.5 hour) + Sand Canyon Pueblo (1 hour)]
- Cost: \$310 for up to 4 people, additional \$40 per person over 4
- Difficulty: easy, but navigating sage and Painted Hand (2 mile RT walk) and uneven terrain at Sand Canyon Pueblo

6. Family Opportunities (Families with children ages 5-13; available all year)

Looking for half-day activities to engage the whole family? Our three Family Opportunities mix learning and fun! Connect with your children while learning about the past through activities tailor-made for your family. Activities listed below are age-dependent, so be sure to let us know who will be included in the fun! Prices are the same as the tours, but for up to 5!

a. Life in the Canyon: Sand Canyon Hike and Hands-On (3-4 hours)



- \$200 for family up to 5 people, additional \$20 per person over 5
- Hands-on activities to possibly include geology, plants, pottery pendants, cordage, stories, investigating the past at Castle Rock Pueblo
- Hike to Saddle Horn Pueblo (2mi RT)
- Recommended ages of children: 5—13

b. Livin' at Lowry: Lowry Pueblo Tour and Hands-On (3-4 hours)

- \$200 for family up to 5 people, additional \$20 per person over 5
- Hands-on activities to possibly include plants, animals, pottery pendants, stories, dragonflies, throwing spears with atlatls
- Tour Lowry Pueblo and Greathouse
- Recommended ages of children: 5—13

c. A Half-Day at the Museum: CAVM Half-Day (3-4 hours)

- \$140 for family up to 5 people (without museum entry) or add \$7 per person, including guide, for museum entry; additional \$14 per person over 5
- Hands-on activities to possibly include Visiting with Respect, Gallery Scavenger Hunt, What Makes a Greathouse?, Dragonflies, throwing spears with atlatls, pottery pendants, or others
- Walk to Dominguez & Escalante Pueblos (1 mi RT)
- Recommended ages of children: 5—13

d. A Half-Day at Painted Hand Pueblo (3-4 hours)

- \$210 for family up to 5 people additional \$21 per person over 5
- Prior to construction of new BLM road, participants will have to hike in with guide
- Hands-on activities to possibly include Dragonflies, throwing spears with atlatls, pottery pendants, creating their own rock art, or others
- Recommended ages of children: 5—13



7. Dolores County Adventure Interpretive Hike (Available August 1-January 31)



Explore the northernmost parts of Canyons of the Ancients National Monument. Your guide will lead you to seldom visited sites of remarkable density. Learn from your knowledgeable guide about the history of the Ancestral Pueblo people who inhabited the Four Corners region. How did these people utilize the geology, plant and animal life, and water sources to not only survive but to thrive in this high-desert area? What can we learn about their culture from the architecture left behind?

Interpretive hike with information on Visit with Respect, Leave No Trace, Ancestral Pueblo culture, botany, biology, archaeology.

- Guide will meet participants at Dove Creek Superette to lead to parking area for hiking **or cycling**.
- Distance: 4.5-5 miles+
- Suggested time: 6+ hours
- Cost: \$350 for up to 4 people, additional \$40 per person over 4
- Participants responsible for lunch/water/snacks
- Difficulty: Challenging with navigating trail-less areas, rocky, steep inclines

8. Burro Canyon Hike (Available August 1-January 31)

Begin at Sand Canyon Pueblo, where your guide will share this expansive canyon-head community and how the Ancestral Pueblo people lived in the years just prior to their mass migration to the south. From there, hike over to view how the Ancestral Pueblo reservoir water retention system worked. Continue your hike to see towers, alcove sites, and rock art – oh my!

- Interpretive hikes with information on Visit with Respect, Leave No Trace, Ancestral Pueblo culture, botany, biology, archaeology
- Guide will meet participants at the Sand Canyon Pueblo Parking area. After viewing Sand Canyon Pueblo, they will park on road shoulder for hiking
- Distance: 3.5-4 miles
- Suggested Time: 6-7 hours
- Cost: \$260 for 4 people, additional \$32 per person over 4
- Participants responsible for water/snacks, etc.
- Difficulty: Moderate to challenging with rockiness, inclines



8.a.b. Hike down to Burro Canyon only or visit Sand Canyon and walk BLM Road 4724 only (no canyon)

- Visiting only the canyon bottom or combining Sand Canyon with a mild walk for surface sites.
- Suggested time: 4 hours
- Cost: \$180 for 4 people, additional \$22.50 per person over 4

9. Walk on the Wild Side - Cross Canyon Wilderness Study Area (WSA) Hike (Available August 1-January 31)



You and your guide will navigate the rough and trail-less terrain to experience Southwest Colorado WSA at its finest. Encounter pristine native vegetation, tracks of wildlife and, of course, numerous Ancestral Pueblo sites. How were they able to navigate these areas wearing sandals that we, today, require boots? How were they able to construct amazing structures on boulders and cliffs that survive even today? Your guide will answer these questions and more when you *walk on the wild side!*

- Interpretive hike with information on Visit with Respect, Leave No Trace, Ancestral Pueblo culture, botany, biology, archaeology.
- Guide will meet participants at Round-up Junction to lead to hiking area
- Distance: 5 miles
- Suggested time: 6-8 hours
- Cost: \$285 for up to 4 people, additional \$35 per person over 4
- Participants responsible for lunch/water/snacks
- Difficulty: Challenging with maneuvering cliff access and moving through brush; there are undefined social/animal trails to follow in some areas.

10. Lowry Community All Day Extravaganza (Available August 1-January 31)

Meet your guide at Lowry Pueblo for an exhilarating day of hiking and maneuvering cliffs as you view and learn about many places of the past. Appreciate the centuries of architecture. Marvel at the rock art signifying winter solstice. Visit an historic honeymoon cabin.

- Interpretive hike with information on Visit with Respect, Leave No Trace, Ancestral Pueblo culture, botany, biology, archaeology
- Guide will meet participants at Lowry Parking Area.
- Suggested Time: 8+ hours; participants responsible for lunch/water/snacks
- Cost: \$310 for up to 4 people, additional \$40 per person over 4
- Difficulty: Challenging with navigating cliff areas, rocky, uneven ground, maneuvering through sites, and moving through brush; once we leave the Lowry area there are undefined social /animal trails in some areas. Distance: approximately 5+ miles plus walking around sites



10.b. Cow Canyon Only (other half of Lowry Full-day) (Available August 1-January 31)

- Cost: \$230 for up to 4 people, additional /\$30 per person over 4

11. Woods Canyon and Dexter Pueblos (Available August 1-January 31)



Hike and explore a large Ancestral Pueblo community and a smaller one from an earlier time. Woods Canyon Pueblo is a canyon rim, talus slope, and canyon bottom city with multiple towers, D-shaped structures, and “cliff dwellings.”

- Interpretive hike with information on Visit with Respect, Leave No Trace, Ancestral Pueblo culture, botany, biology, archaeology.
- Guide will meet participants at Yellow Jacket Mercantile on Road Y just west of Hwy 491 and lead to parking space on BLM 4528.
- Suggested Time: 6 hours; participants responsible for lunch, water, snacks
- Cost: \$285 for up to 4 people, additional \$35 per person over 4
- Difficulty: Moderate-challenging with steep downhill and uphill, maneuvering through sites, moving through brush

12. Chasing the Wild Goose (Pueblo) (Available August 1-January 31)

One of the best hikes in the area! Explore Cross Canyon Wilderness Study Area (WSA) and discover history through the ages! Experience how the Ancestral Pueblo people constructed their homes throughout time. Enjoy and appreciate riparian landscapes of the canyon. Your guide will lead you on an adventure of learning about the deep history of this country. Abundant vegetation makes secret of ancient rock art, so bring binoculars! Visit a historic homestead to witness how Euro-Americans also learned to thrive here.

- Interpretive hike with information on Visit with Respect, Leave No Trace, Ancestral Pueblo culture, botany, biology, archaeology.
- Guide will meet participants at BLM Canyons of the Ancients kiosk on corner of County Road 10 and BLM Road 4721 to lead to hiking point.

- Suggested Time: 5-6 hours; participants responsible for lunch, water, snacks
- Cost: \$320 for up to 4 people, additional \$40 per person over 4
- Difficulty: Moderate with maneuvering through brush, potential stream crossings

